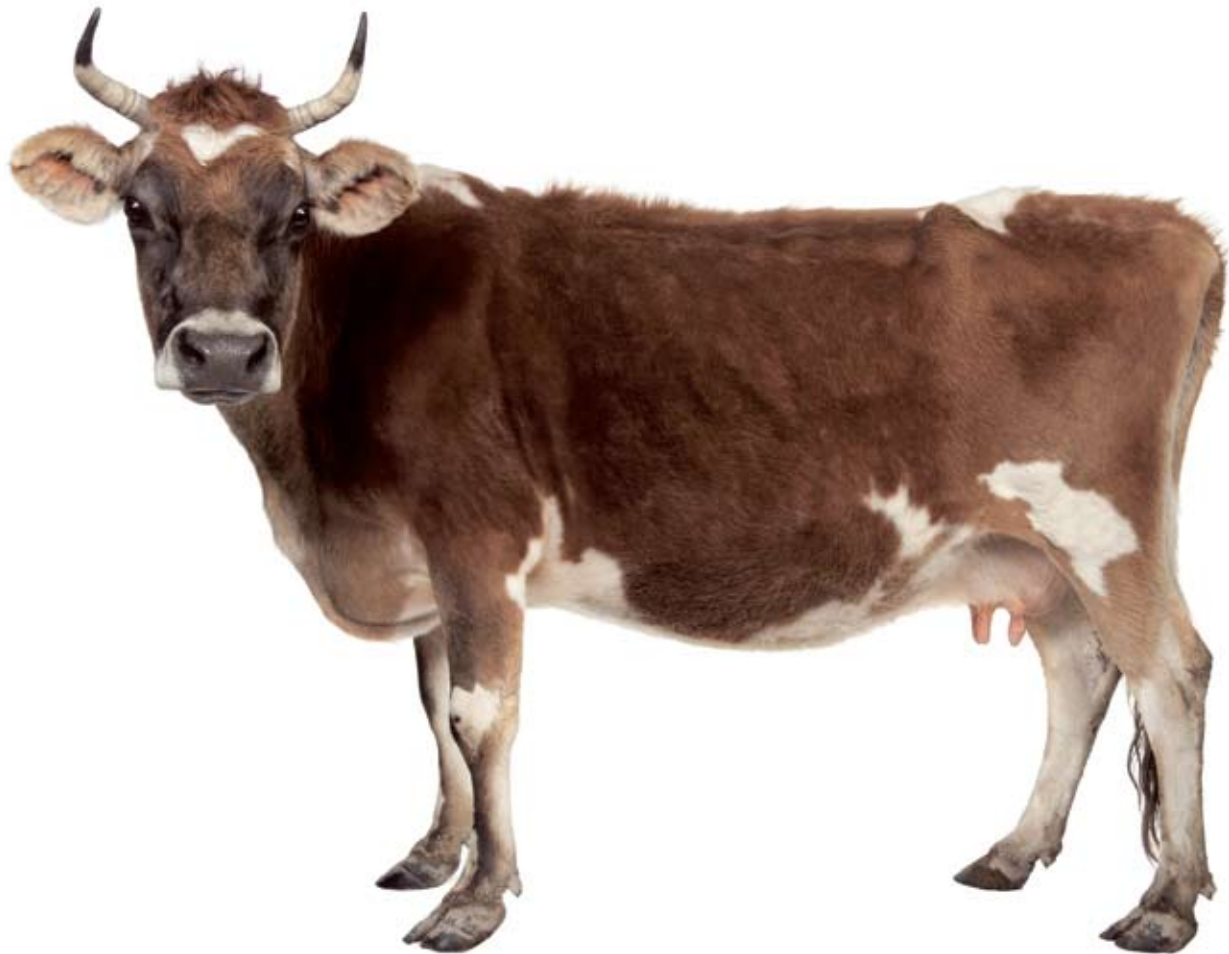


# Cow CD Markers

- Wide range of specificities
- CD335 for NK Cells
- CD4 & CD8 conjugates for flow cytometry
- Manufactured to ISO 9001 standards



# Cow CD Markers

AbD Serotec offers a wide range of antibodies raised against cow cell surface antigens.

As a leading supplier of veterinary immunology reagents, we provide an excellent selection of antibodies raised directly against cow CD marker antigens as shown in the table below. In addition, we offer CD marker antibodies that have been qualified as bovine cross-reactive for further investigation of the cow immune system.

Specificity	Clone	Format	Applications	Product Code	Additional Formats
CD1w2	CC13	Purified	F	MCA1646G	
CD1w2	CC20	Purified	C, F, IP	MCA2058G	RPE, S/N
CD1w2	CC14	Purified	C, F, IP	MCA831G	Ascites
CD1w3	CC43	Purified	F, IP	MCA1647G	S/N
CD2	CC42	Purified	C, F, IP, P*	MCA833G	Ascites, FITC
CD4	CC8	Purified	C, F, IP	MCA1653G	Alexa Fluor® 647, FITC, RPE
CD4	CC30	Purified	C, F, IP, P	MCA834G	S/N
CD5	CC17	Purified	C, F, IP	MCA835G	Alexa Fluor® 647, FITC
CD6	CC38	Purified	C, F, IP	MCA836G	Ascites
CD8	CC63	Purified	C, F, IP, P	MCA837G	Alexa Fluor® 647, FITC, RPE
CD8 beta	CC58	Purified	F, IP	MCA1654G	RPE, S/N
CD11a	IL-A99	Purified	F, IP	MCA2429	FITC, RPE
CD11b	CC126	Purified	C, F, IP	MCA1425G	FITC
CD13	CC81	Purified	F	MCA2338	FITC
CD14	CC-G33	Purified	F, IF	MCA2678	FITC
CD21	CC21	Purified	C, F, IP	MCA1424G	FITC, RPE
CD25	IL-A111	Purified	C, F, IP	MCA2430	FITC, RPE
CD26	CC69	Purified	F, IP	MCA1652G	Alexa Fluor® 647, S/N
CD41	IL-A164	Purified	C, F, IP	MCA2432	FITC, RPE
CD44	IL-A118	Purified	F	MCA2433	FITC, RPE
CD45	CC1	S/N	C, F, IP	MCA832S	FITC
CD45R	CC76	Purified	C, F, IP	MCA1650G	FITC, S/N
CD62L	CC32	Purified	F	MCA1649G	S/N
CD63	CC25	Purified	F	MCA2042G	S/N
CD172a	CC149	Purified	F	MCA2041G	RPE-Alexa Fluor® 647, S/N
CD205	CC98	Purified	C, F, IP	MCA1651G	FITC
CD335	AKS1	Low Endotoxin	F, FN, WB	MCA2365EL	Alexa Fluor® 488, Purified, RPE

Applications: C = Immunohistology – frozen, F = Flow cytometry, IP = Immunoprecipitation, P = Immunohistology – paraffin, FN = Functional studies, WB = Western Blotting

Our cow CD marker range is complemented by early and late cow cytokine antibodies for evaluating disease progression and prognosis. To view our entire range of cow antibodies, search online at:

[www.abdserotec.com/VET](http://www.abdserotec.com/VET)

**North & South America**  
Tel: +1 800 265 7376  
Fax: +1 919 878 3751  
Email: [sales.us@abdserotec.com](mailto:sales.us@abdserotec.com)

**Europe**  
Tel: 00800 CALL 4ABD  
(00800 2255 4223)  
Fax: 00800 2FAX 2ABD  
(00800 2329 2223)  
Email: [sales.eu@abdserotec.com](mailto:sales.eu@abdserotec.com)

**Worldwide**  
Tel: +44 1865 852 700  
Fax: +44 1865 852 739  
Email: [sales@abdserotec.com](mailto:sales@abdserotec.com)

[www.abdserotec.com](http://www.abdserotec.com)

